

# 5010 Mount Vernon

[GO TO: Floor Plan](#)

One of three beautifully appointed patio homes just blocks from the Museum! This home offers a Texas Contemporary feel, pairing its rough stone and stucco exterior with clean, modern lines. High-end finishes inside include quarter-sawn oak and limestone floors, crown moldings, granite and stainless appliances. Open floor-plan. Elevator serves all three floors. The master features a tray ceiling, wall of built-ins, coffee bar and bath with gorgeous granite counters, huge closet.

3 Floors; 3 Bedrooms; 4 Full Baths / 1 Half Bath; 2-Car Attached Garage  
4,093 sq ft (per Builder) on 4,592 Lot (per Appraisal District)

## ENTRY & FOYER - 16' X 14'

Covered entry with archways, limestone tile front porch with two exterior gas coachman's lanterns, enclosed landscaped courtyard with two lockable wrought iron entry gates (with remote control) 8' double mahogany front doors with beveled glass panel inserts and overhead beveled glass transom with mahogany framing  
Crown molding  
Staircase with stained oak hardwood treads, contemporary cast iron spindled balustrade and cast iron banister with decorative newel posts  
Tall (6' 8") fixed window illuminates stairwell  
Closet with hanging bar, shelf and under-stair storage  
Recessed lighting  
Dramatic ceiling vaulted to 3<sup>rd</sup> floor  
Stained oak quarter-sawn floor with hardwood cove molding trim along extended height baseboards  
Exit door to attached garage  
Cased opening with upper level carved pediment leads to Front Hall  
Double pocket doors with upper level carved pediment leads to Library

## LIBRARY - 11' 3" X 15'

Wall with floor-to-ceiling built-in with adjustable shelves above and cabinets below  
Decorative 6-arm ironwork candelabra chandelier with shades  
Recessed halogen lighting  
Crown molding  
Stained oak quarter-sawn floor with hardwood cove molding trim along extended height baseboards

## FRONT HALL

Stained oak quarter-sawn floor with hardwood cove molding trim along extended height baseboards

Cased opening with upper level carved wood pediment leading to Living Room  
Cased opening with upper level carved wood pediment leading to Dining Room  
Vestibule hallway containing Elevator (to all three floors) and Powder Room

## WET BAR

Under-mounted sink with polished nickel goose-neck fixtures set into Absolute Black\* slab granite counter with cabinets below  
Counter-to-cabinet Absolute Black\* slab granite backsplash  
Under-counter stainless steel GE Monogram ice machine  
Upper level glass-faced cabinets with adjustable shelves and under-cabinet lighting

## POWDER ROOM

Under-mounted Duravit sink with decorative polished nickel fixtures set into slab marble counter with cabinets below  
Decorative wall mounted sconce lighting  
Framed vanity mirror  
Recessed lighting  
Crown molding  
Energy efficient low-flow Toto commode  
Faux painted walls  
Stained oak quarter-sawn floor with hardwood cove molding trim along extended height baseboards

## DINING ROOM - 12' 8" X 15' 10"

Wall with fixed glass doors and double glass French doors leading to landscaped side courtyard  
Recessed lighting  
Recessed halogen lighting  
Decorative wall mounted light sconces with shades  
Crown molding

Information such as measurements, square footage and descriptions of materials, fixtures, or other components of the improvements may not be accurate and should not be relied upon, but should be independently verified by Buyer prior to purchase.

# 5010 Mount Vernon

[GO TO: Floor Plan](#)

Stained oak quarter-sawn floor with hardwood cove molding trim along extended height baseboards

## LIVING ROOM – 13' 10" X 17' 2"

Wall with 8' fixed doors and double French doors with glass panel inserts leading to rear yard and covered porch

Cast stone gas fireplace with cast stone surround and hearth

Wall of built-ins on both sides of fireplace with adjustable shelves above and cabinets below

Crown molding

Recessed lighting

Recessed halogen lighting

Recessed spotlight focused over mantel

18" x 18" travertine tile floor with extended height baseboards

## KITCHEN W/EAT- IN BREAKFAST ROOM – 13' 2" X 24' 9"

Breakfast Room with double 8' fixed windows overlooking rear yard

Two-tiers of wood cabinets with adjustable shelves and under-cabinet lighting

Custom cabinetry features include under-counter pull-out shelves, oversized corner two-tier rotating lazy susan storage unit, trash slide, deep pan drawers, extra-wide drawers and Verde Lara granite\* topped kitchen peninsula with bookshelf

Verde Lara granite\* counters with and 4" granite backsplash

Thermador stainless steel built-in side-by-side refrigerator / freezer

Bosch stainless steel dishwasher

Thermador stainless steel microwave

Thermador stainless steel warming drawer

Thermador stainless steel self-cleaning oven, with convection bake/roast/broil capabilities

Wolf professional stainless steel 6-burner gas range with oven

Wall mounted stainless steel spatter panel behind range

Wolf stainless steel vent and light

Under-mounted oversized stainless steel "farmer's style" sink with single lever fixture with retractable sprayer head, soap/lotion dispenser and disposal

Walk-in pantry with 6 wrap-around shelves and jamb light

Crown molding

Recessed lighting

18" x 18" travertine tile floor with extended height baseboards

## SECOND FLOOR

### SECOND FLOOR HALLWAY

Contemporary cast iron spindled balustrade with cast iron newel posts overlooks hardwood stairs below

Wall mounted sconce lighting in stairwell

Carpeted stairs with cast iron spindled balustrade to third floor

Double French doors with glass panel inserts leads to Juliet balcony with limestone flooring, archways and cast iron railings

Crown molding

Linen closet

Stained oak quarter-sawn floor with hardwood cove molding trim along extended height baseboards

Cased opening to Second Floor Hallway & Elevator

Door to Bedroom # 3

Door to Utility Room

### UTILITY ROOM - 10' 7" X 7' 1"

Space for full sized washer and dryer

Electric and gas dryer connections

Slab granite counters with 4" granite backsplash and cabinets below

Stainless steel soaking sink with single lever fixture with retractable sprayer head

Drip-dry rod

Upper level cabinets with adjustable shelves and under-cabinet lighting

Recessed lighting

Crown molding

12" x 12" stone tile floor with drain

### BEDROOM # 3 – 13' 10" X 13'

Vestibule entry

Recessed block-paneled alcove with tall (5' 8") casement window

Crown molding

Recessed lighting

Carpet with extended height baseboards

En Suite bath with pocket door; built-in granite topped 10-drawer chest of drawers; under-mounted sink set into slab granite counter with cabinets and drawers below; mirror mounted

Information such as measurements, square footage and descriptions of materials, fixtures, or other components of the improvements may not be accurate and should not be relied upon, but should be independently verified by Buyer prior to purchase.

# 5010 Mount Vernon

[GO TO: Floor Plan](#)

vanity lighting; energy efficient low-flow Toto commode; shower with tile surround with contrasting embossed tile accent border and rimless glass enclosure; casement window; crown molding; recessed lighting; diagonally set 12" x 12" marble tile floor; and carpeted walk-in closet with double and single hanging bars

## SECOND FLOOR HALLWAY

Stained oak quarter-sawn floor with hardwood cove molding trim along extended height baseboards  
Elevator (to all three floors)  
Cased doorway to Master Suite  
Door to Bedroom # 2

## BEDROOM # 2 – 13' X 14' 1"

Casement window  
Crown molding  
Recessed lighting  
Carpet with extended height baseboards  
En Suite bath with under-mounted sink set into slab granite counter with cabinets and drawers below; mirror mounted vanity lighting; energy efficient low-flow Toto commode; tub/shower with tile surround with embossed accent tiles; casement window; crown molding; recessed lighting; diagonally set 12" x 12" travertine tile floor; and carpeted walk-in closet with double and single hanging bars and built in chest of (6) drawers

## MASTER SUITE

### MASTER BEDROOM – 18' 5" X 15' 10"

Vestibule hallway with coffee/juice bar with granite counter with ogee edging; under-counter GE monogram refrigerator with ice maker and panel front; and upper level cabinets with adjustable shelves and under-cabinet lighting  
Wall with floor-to-ceiling built-in with adjustable shelves above, TV Niche, and cabinets below  
Double coffered tray ceiling  
Casement windows  
Crown molding  
Recessed lighting  
Stained oak quarter-sawn floor with hardwood cove molding trim along extended height baseboards  
Double wood doors to Master Bath

## MASTER BATH

Two separate vanities with under-mounted Kohler sinks with polished nickel split finish spread fixtures set in slab blue/gree Costa Esmeralda granite\* countertop with cabinets and drawers below  
Counter to ceiling vanity mirrors with mirror-mounted sconce lighting  
Oversized Ultra Bain jetted tub set in granite deck in recessed alcove  
Shower with rimless glass door, marble surround with mosaic tile border trim and bench seat,  
Double wood doors to walk-in closet with built-in shelves; built-in chest of (16) drawers with cabinets above with under-cabinet lighting; track lighting; full length dressing mirror; and single and double hanging rods  
Crown molding  
Recessed lighting  
18" x 18" marble tile floor

## *THIRD FLOOR*

### THIRD FLOOR GAME ROOM - 18' 2" X 18'

Elevator  
Double casement windows  
Coffered ceiling  
Recessed lighting  
Ceiling height of 9'  
Carpet  
Door to attic access  
En Suite bath with under-mounted sink set into slab granite counter with cabinets and drawers below; mirror mounted vanity lighting; energy efficient low-flow Toto commode; tub/shower with ceramic tile surround with mosaic accent tiles; crown molding; recessed lighting; diagonally set 12" x 12" travertine tile floor

## *OTHER FEATURES*

Audio system wiring throughout first level and master  
Pre-wired for cable and multiple phone lines  
Elevator to all three floors  
Extended height baseboards with hardwood cove molding trim

Information such as measurements, square footage and descriptions of materials, fixtures, or other components of the improvements may not be accurate and should not be relied upon, but should be independently verified by Buyer prior to purchase.

## 5010 Mount Vernon

[GO TO: Floor Plan](#)

---

Tall ceilings throughout. First floor = 10', 2<sup>nd</sup> and 3<sup>rd</sup> floors = 9'

Zoned air conditioning and heating (3 zones)

Alarm system

Two 50 gallon hot water heaters

Low E energy efficient windows throughout

Smoke detectors with battery back-up throughout

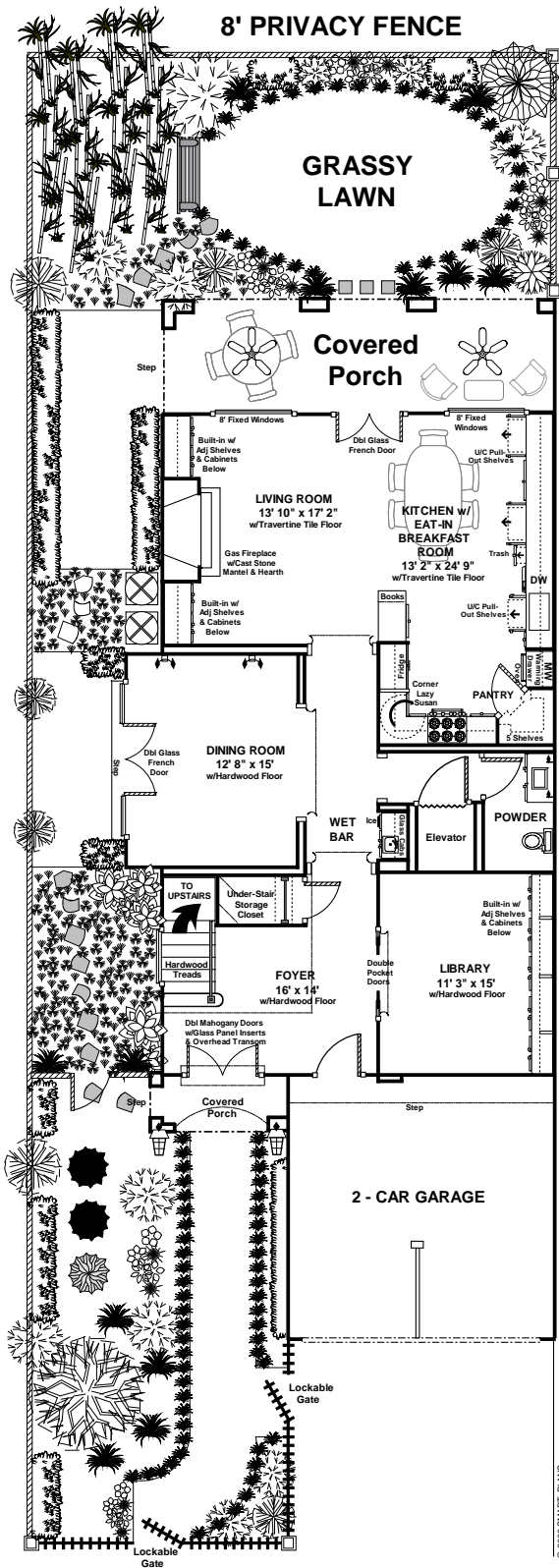
Professionally landscaped yard with (Rainbird) automatic sprinkler system, drains, grassy lawn, flowering shrubs, mature plantings, and 8' wood privacy fence with stone columns

Landscaped front courtyard with stone corner columns and two lockable iron gates

Rear covered porch with limestone tile flooring, beadboard ceiling with two ceiling fans, and plumbed with gas line for grill/smoker/rotisserie

Attached 2-car garage with Wayne Dalton low noise, low vibration automatic opener with exterior keypad, and ceiling mounted fluorescent lighting

\* = Per Builder



This floor plan does not calculate, nor purport to represent in any way the total square footage of the property depicted. This is a concept drawing and is not to be confused with, or used as, any sort of property appraisal. While every attempt has been made to ensure the accuracy of this floor plan, measurements are approximate and have been rounded for expediency. The services, systems and appliances shown in the floor plan have not been tested and no guarantee as to their operating ability, efficiency, or if they are indeed included in the sale of the property is implied by this concept drawing. Buyer should independently validate and verify all information visually depicted here.

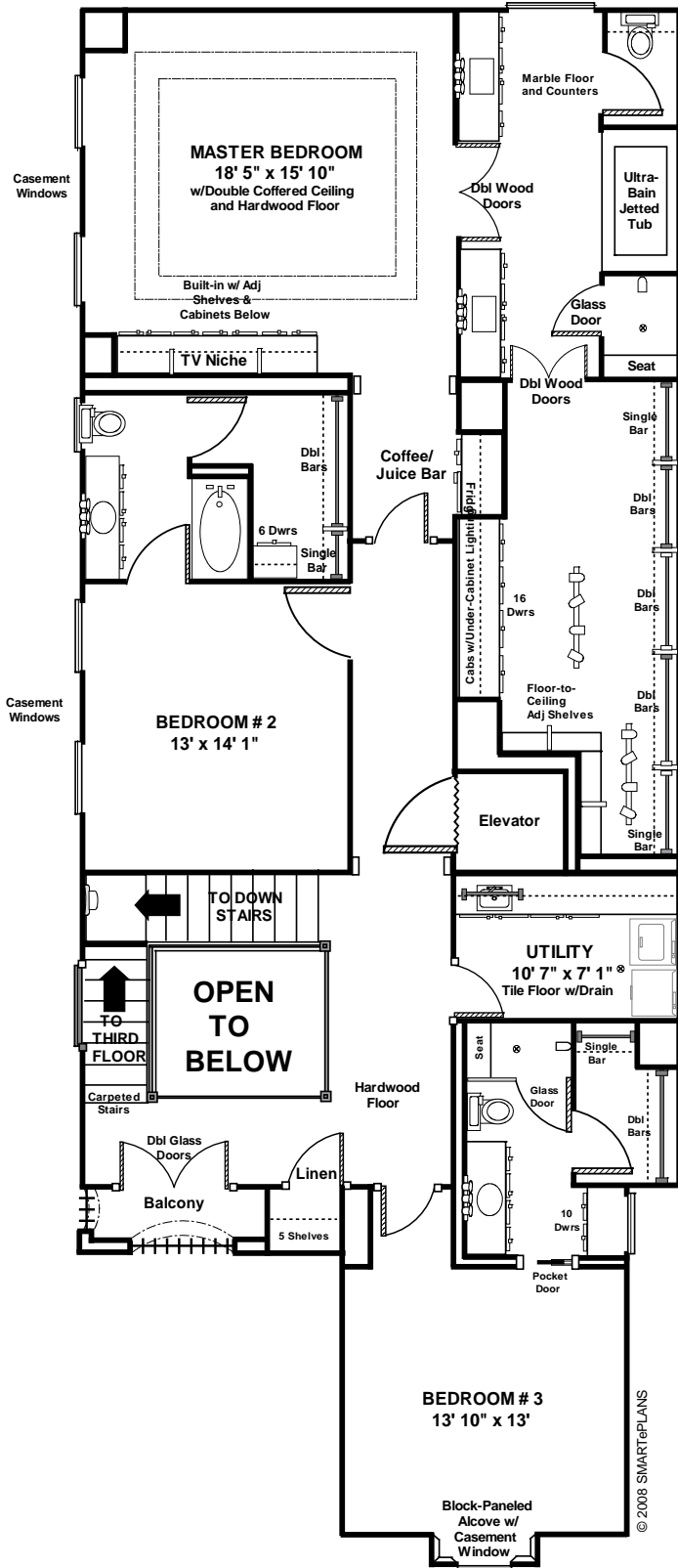
© 2008 SMARTePLANS

**FIRST FLOOR**

Information such as measurements, square footage and descriptions of materials, fixtures, or other components of the improvements may not be accurate and should not be relied upon, but should be independently verified by Buyer prior to purchase.

# 5010 Mount Vernon

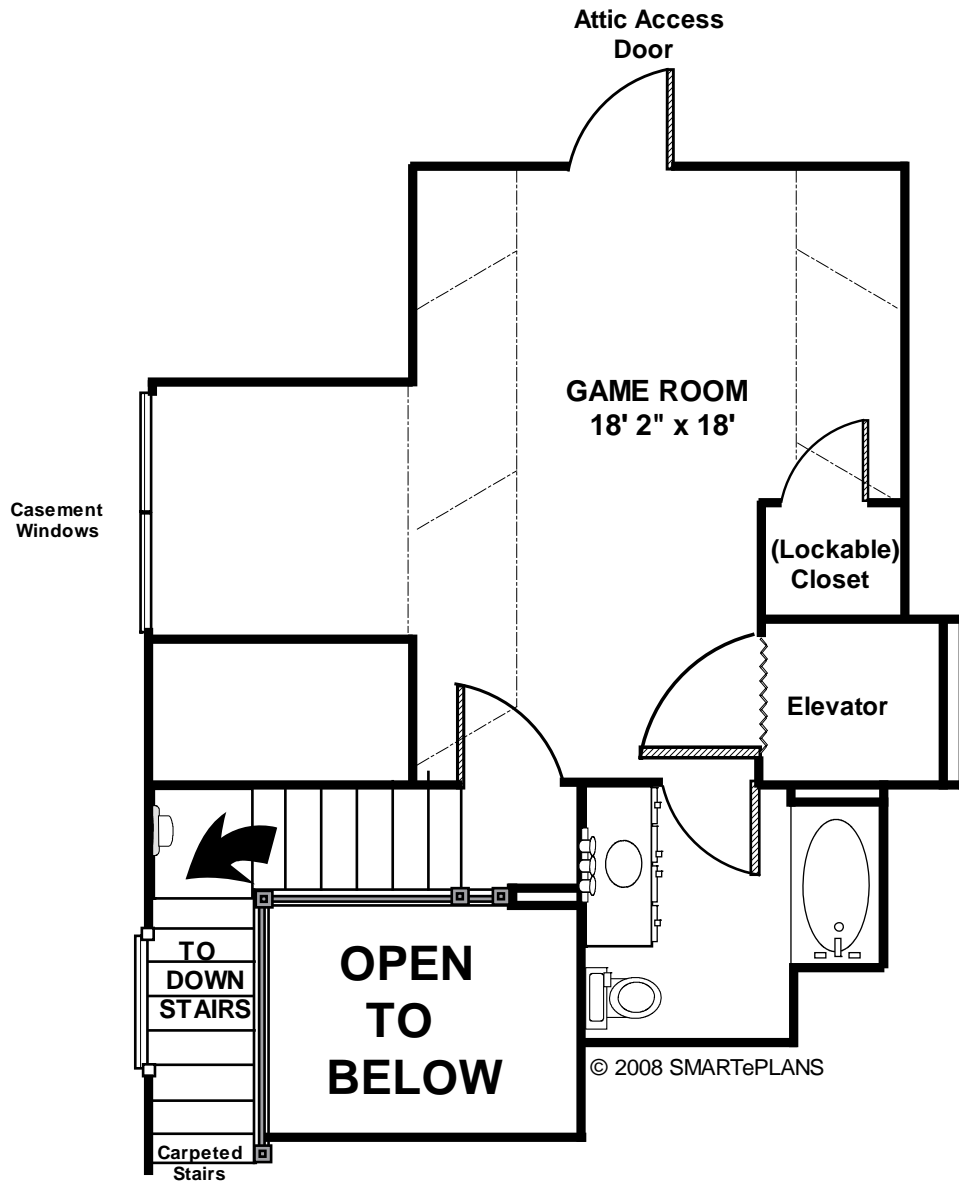
[GO TO: Floor Plan](#)



## SECOND FLOOR

Information such as measurements, square footage and descriptions of materials, fixtures, or other components of the improvements may not be accurate and should not be relied upon, but should be independently verified by Buyer prior to purchase.  
Page 6 of 7 Pages

[GO TO: Floor Plan](#)



**THIRD FLOOR**